

# OTDR Report (1310 nm (9 μm))

## General Information

File name:	18_1310.trc	Customer:	ADNOC
Test date:	14-Feb-24	Company:	PAN ARABIA
Test time:	4:05 PM	Fiber ID:	18
Cable ID:	FAR5 to SS6A (C) B (A-B)		
Job ID:	0500831		
Comments:	END TO END TEST		

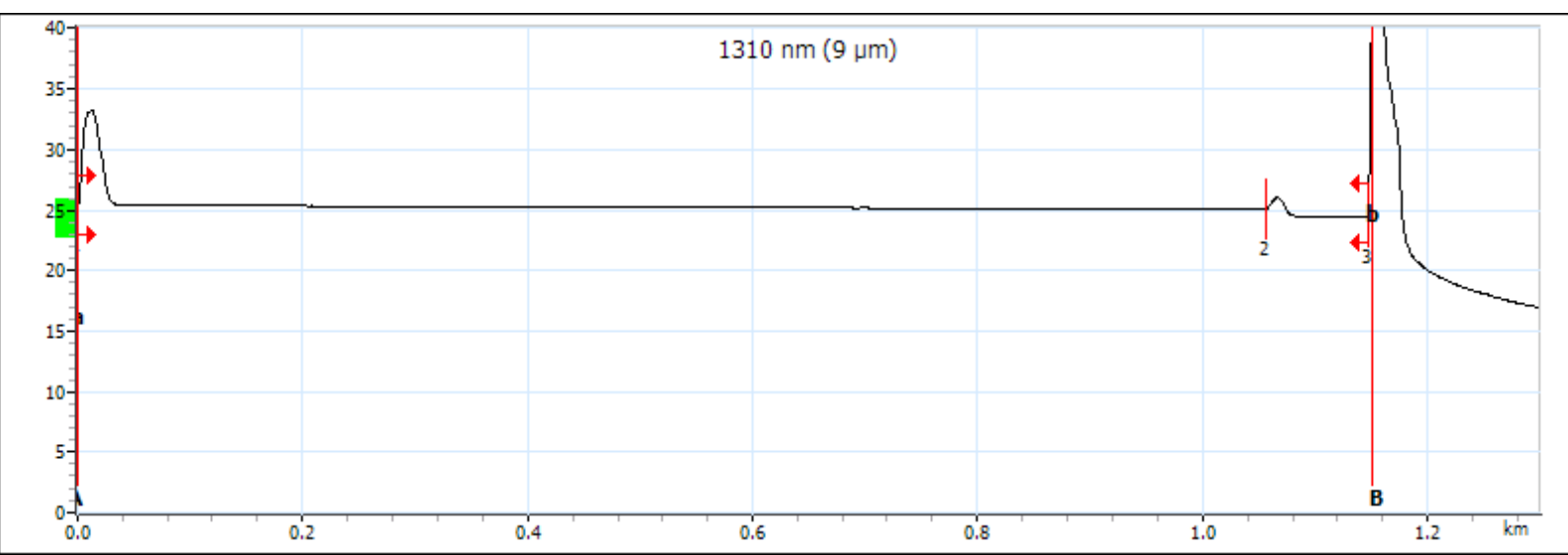
## Locations

	Location A	Location B
Location	FAR5	SS6A
Operator	PANDA	HABEEB
Model	MAX-720C-Q1-EA-EI	
Serial number	1206159	
Calibration date	29-Mar-23 (UTC)	

## Results

Span length:	1.1480 km	Average loss:	0.846 dB/km	Injection level:	25.4 dB
Span loss:	0.971 dB	Average splice loss:	---		
Span ORL:	39.51 dB	Maximum splice loss:	---		

## Graph



## Markers

Marker	Position (km)	Value (dB)	A-B LSA attenuation:	1.027 dB/km	A-B average loss:	-7.400 dB/km
a	0.0000	25.414	A-B LSA loss:	1.181 dB	4-point Event Loss:	-8.914 dB
A	0.0000	25.414	A-B ORL:	37.80 dB	Maximum reflectance:	-43.5 dB
B	1.1502	33.926				
b	1.1502	33.926				

# OTDR Report (1310 nm (9 μm))

## Event Table

Type	No.	Pos./Length (km)	Loss (dB)	Reflectance (dB)	Attenuation (dB/km)	Cumulative (dB)
First Connector	1	0.0000	---	-43.6		0.000
Section		1.0570	0.360		0.341	0.360
Reflective	2	1.0570	0.545	-61.6		0.905
Section		0.0910	0.066		0.723	0.971
Reflective	3	1.1480	---	> -23.5		0.971

## Macrobend

Position (km)	Delta Loss (dB)

## Pass/Fail Thresholds

	1310 nm (9 μm)

## Test Parameters

	A → B
Wavelength (nm)	1310 nm (9 μm)
Range (km)	1.3000
Pulse (ns)	100
Duration (s)	5

## Test Settings

	A → B	Macrobend Wavelengths	Macrobend Delta Loss (dB)
IOR	1.467700		
Backscatter (dB)	-79.45		
Helix factor (%)	0.00		
Splice loss detection threshold (dB)	0.020		
Reflectance detection threshold (dB)	-72.0		
End-of-fiber detection threshold (dB)	5.000		

# OTDR Report (1550 nm (9 μm))

## General Information

File name:	18_1550.trc	Customer:	ADNOC
Test date:	14-Feb-24	Company:	PAN ARABIA
Test time:	4:05 PM	Fiber ID:	18
Cable ID:	FAR5 to SS6A (C) B (A-B)		
Job ID:	0500831		
Comments:	END TO END TEST		

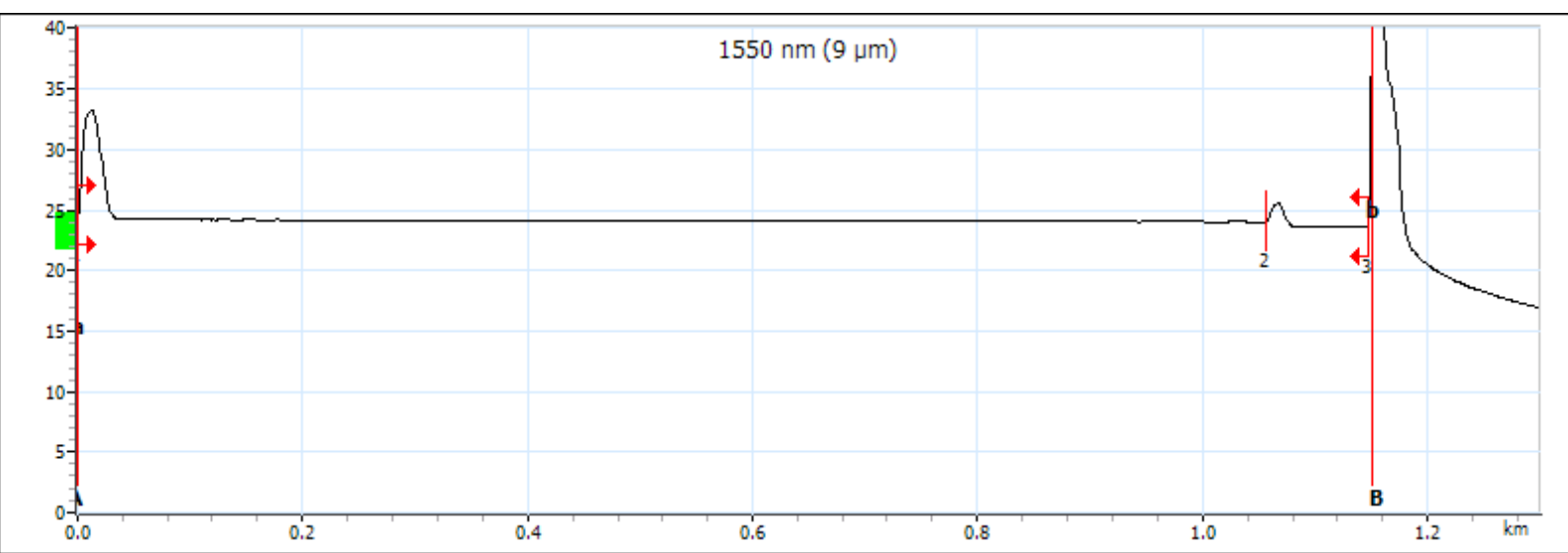
## Locations

	Location A	Location B
Location	FAR5	SS6A
Operator	PANDA	HABEEB
Model	MAX-720C-Q1-EA-EI	
Serial number	1206159	
Calibration date	29-Mar-23 (UTC)	

## Results

Span length:	1.1478 km	Average loss:	0.596 dB/km	Injection level:	24.2 dB
Span loss:	0.684 dB	Average splice loss:	---		
Span ORL:	41.73 dB	Maximum splice loss:	---		

## Graph



## Markers

Marker	Position (km)	Value (dB)	A-B LSA attenuation:	0.917 dB/km	A-B average loss:	-8.312 dB/km
a	0.0000	24.679	A-B LSA loss:	1.054 dB	4-point Event Loss:	-9.791 dB
A	0.0000	24.679	A-B ORL:	39.22 dB	Maximum reflectance:	-42.7 dB
B	1.1502	34.239				
b	1.1502	34.239				

# OTDR Report (1550 nm (9 μm))

## Event Table

Type	No.	Pos./Length (km)	Loss (dB)	Reflectance (dB)	Attenuation (dB/km)	Cumulative (dB)
First Connector	1	0.0000	---	-43.7		0.000
Section		1.0569	0.199		0.189	0.199
Reflective	2	1.0569	0.431	-61.6		0.630
Section		0.0909	0.054		0.595	0.684
Reflective	3	1.1478	---	> -24.0		0.684

## Macrobend

Position (km)	Delta Loss (dB)

## Pass/Fail Thresholds

	1550 nm (9 μm)

## Test Parameters

	A → B
Wavelength (nm)	1550 nm (9 μm)
Range (km)	1.3000
Pulse (ns)	100
Duration (s)	5

## Test Settings

	A → B	Macrobend Wavelengths	Macrobend Delta Loss (dB)
IOR	1.468325		
Backscatter (dB)	-81.87		
Helix factor (%)	0.00		
Splice loss detection threshold (dB)	0.020		
Reflectance detection threshold (dB)	-72.0		
End-of-fiber detection threshold (dB)	5.000		